



# GMT MONTHLY MEMBERSHIP PROGRESS REPORT

Results as of: 5/31/2020

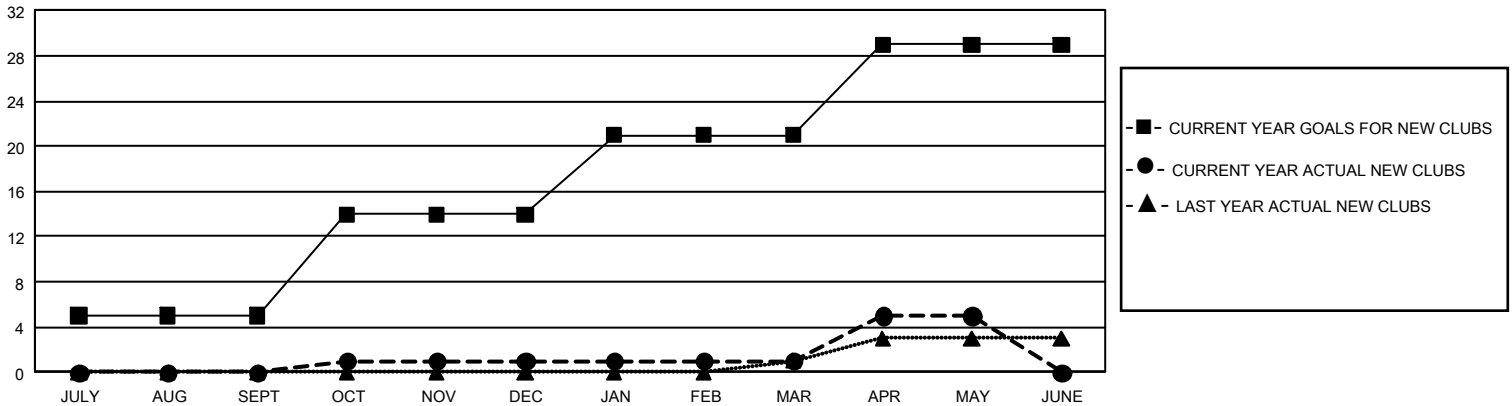
## GMT Constitutional Area 1, Group E

GMT: OPEN

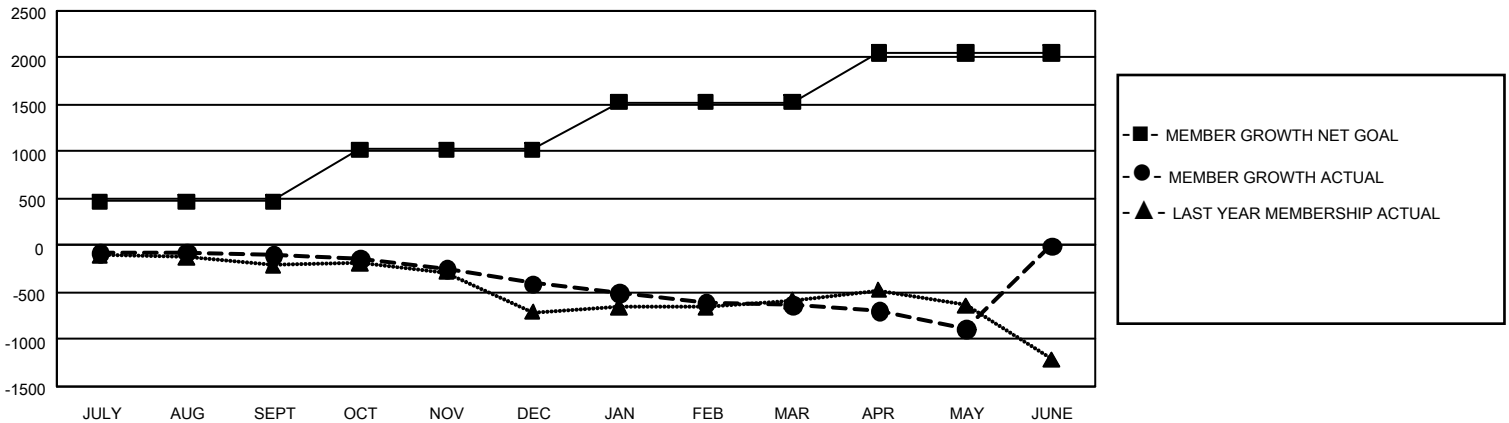
REPORT DOES NOT INCLUDE CLUBS IN UNDISTRICTED AREAS.

Clubs				Members			
RESULTS FOR 2019-2020				RESULTS FOR 2019-2020			
QUARTER	NEW CLUB GOAL	NEW CLUBS	DROPPED CLUBS	QUARTER	MEMBER GROWTH NET GOAL	MEMBER GROWTH ACTUAL	DROPPED MEMBERS ACTUAL (including transfers)
JULY/AUG/SEPT	15	0	3	JULY/AUG/SEPT	1,407	795	821
OCT/NOV/DEC	27	1	8	OCT/NOV/DEC	1,656	725	972
JAN/FEB/MAR	21	0	7	JAN/FEB/MAR	1,527	764	902
APR/MAY/JUNE	24	4	1	APR/MAY/JUNE	1,557	223	460

**GOALS AND ACTUAL NEW CLUBS CUMULATIVE**



**GOALS AND ACTUAL MEMBERS CUMULATIVE**



<b>DROPPED CLUBS: 19</b>	700 CLUBS OF 1,223 ADDED 1 OR MORE NEW MEMBERS	<b><u>GENDER DISTRIBUTION</u></b> MALE            26,872 (74.32%) FEMALE         9,285 (25.68%)
<b><u>DROPPED MEMBERS</u></b> DECEASED            501 CLUB CANCELLED      81 OTHER                 2,572 <hr/> TOTAL                 3,154	<a href="#">CLICK HERE FOR CUMULATIVE MEMBERSHIP DATA</a>	TOTAL FAMILY UNIT MEMBERS            6,370 FAMILY MEMBERS PAYING HALF DUES      3,251